

 **HEADWATERS** INC.
NATURAL RESOURCES CONSULTING
WWW.HEADWATERS-INC.COM

Date Created: 4/1/2021 Created by: JDL

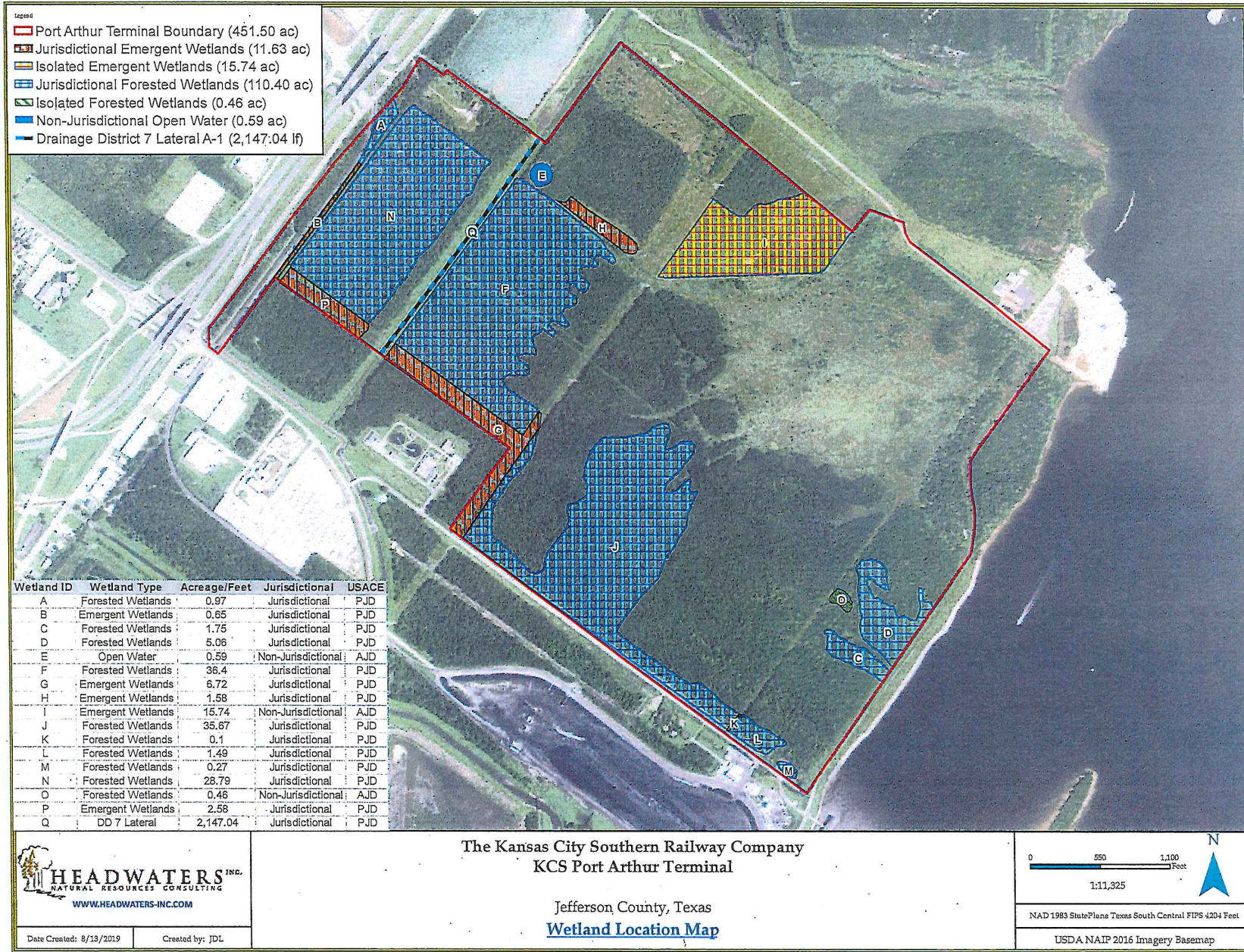
The Kansas City Southern Railway Company
KCS Port Arthur Terminal
SWG-2013-00399 - Modification 1
Jefferson County, Texas
Figure 1 - General Location Map

0 5,000 10,000
Feet

1:100,000

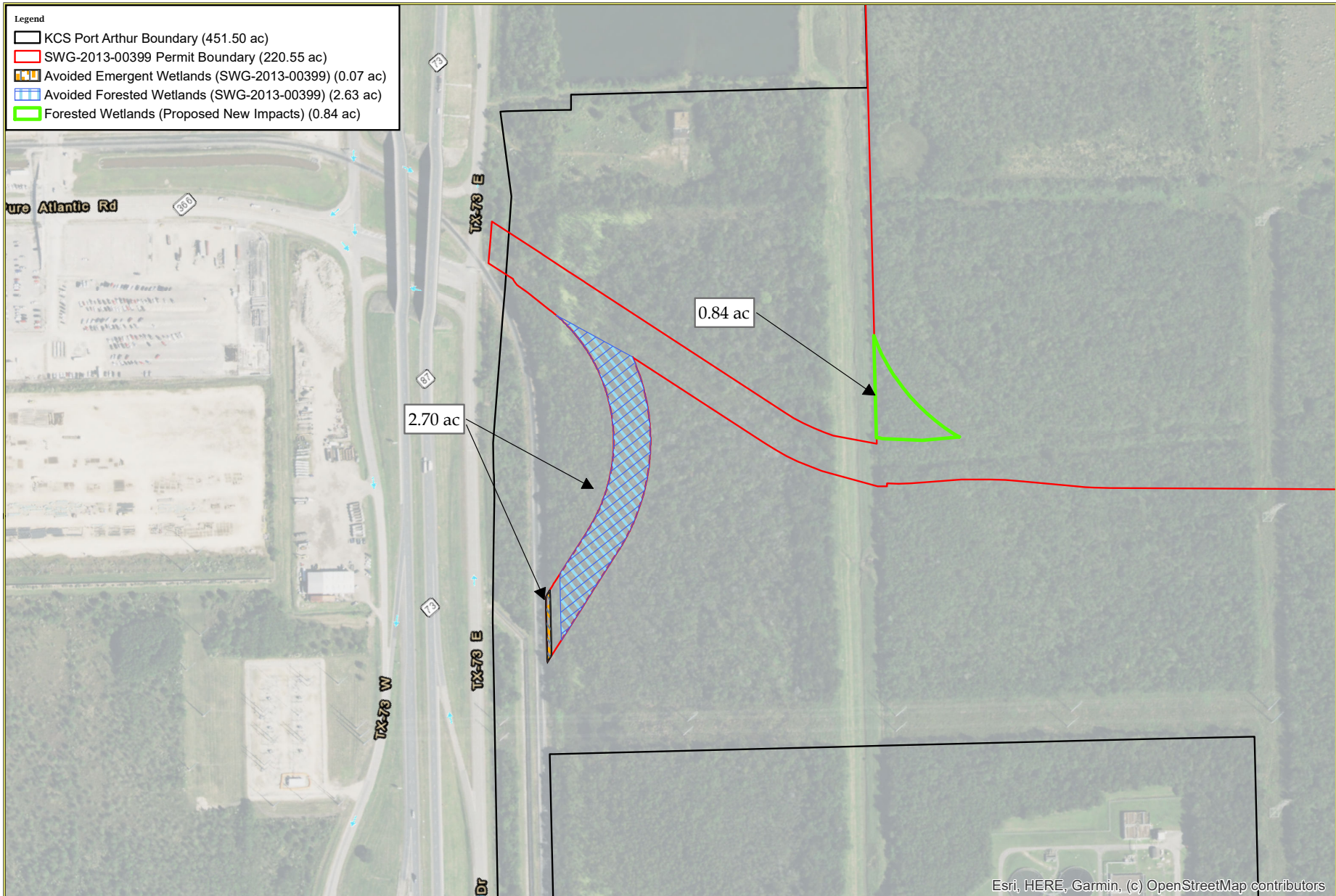
NAD 1983 StatePlane Texas South Central FIPS 4204 Feet

ESRI USA Topographic Basemap



Date Created: 8/13/2019 Created by: JDL

S:\PROJECT FILES\KCS\Port Arthur Loop\Mapplg\poster2018.mxd



HEADWATERS INC.
NATURAL RESOURCES CONSULTING
WWW.HEADWATERS-INC.COM

Date Created: 4/1/2021 Created by: JDL

The Kansas City Southern Railway Company
KCS Port Arthur Terminal
SWG-2013-00399 - Modification 1
Jefferson County, Texas
Figure 2 - Proposed Permit Amendment

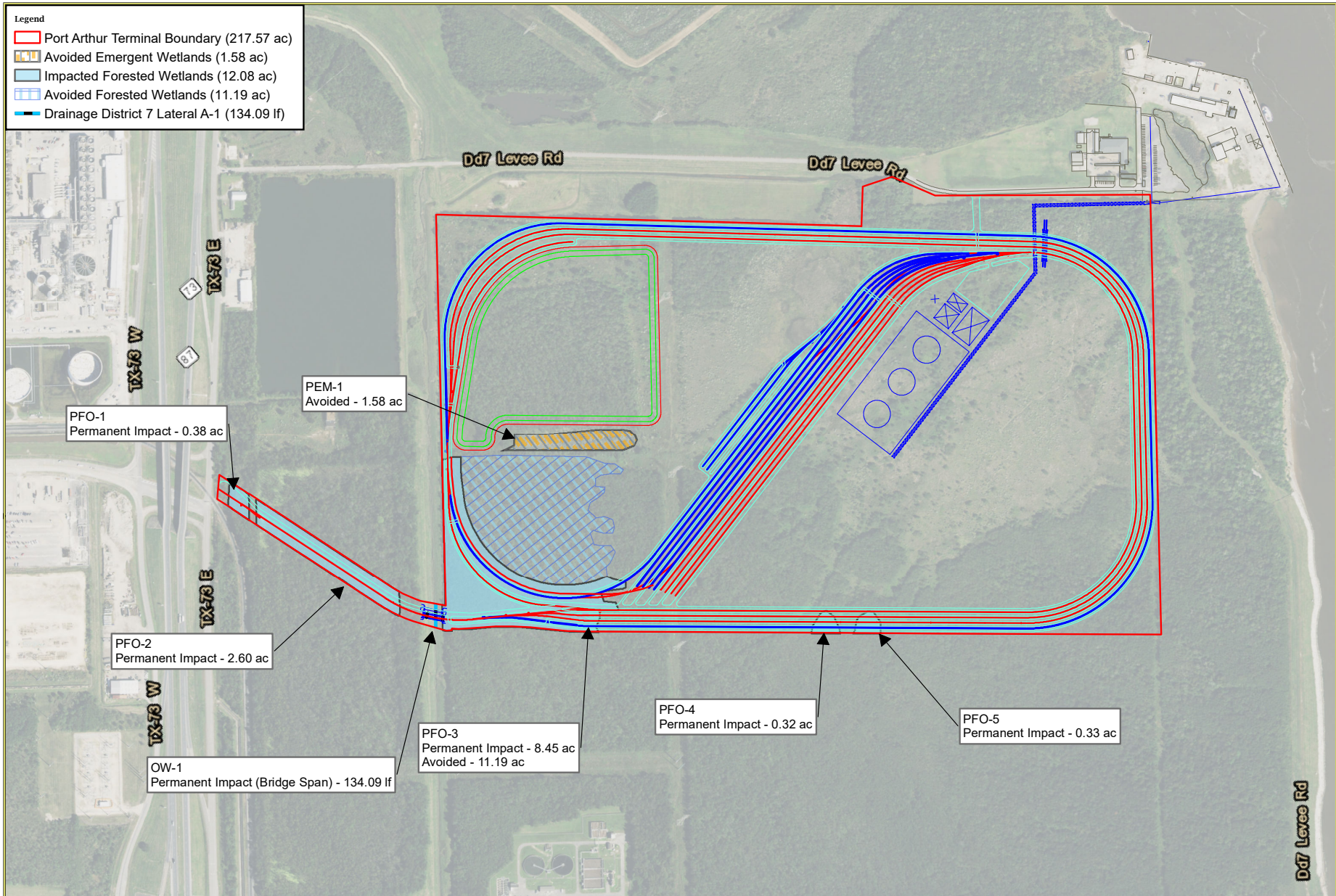
Esri, HERE, Garmin, (c) OpenStreetMap contributors


0 250 500
Feet

1:5,000

NAD 1983 StatePlane Texas South Central FIPS 4204 Feet

USDA NAIP 2019 Imagery Basemap



 <p>HEADWATERS INC. NATURAL RESOURCES CONSULTING WWW.HEADWATERS-INC.COM</p>	<p>The Kansas City Southern Railway Company KCS Port Arthur Terminal SWG-2013-00399 - Modification 1 Jefferson County, Texas Figure 3 - Wetland Impact Map</p>	<p>0 425 850 Feet</p> <p>1:8,500</p> <p>NAD 1983 StatePlane Texas South Central FIPS 4204 Feet</p> <p>USDA NAIP 2019 Imagery Basemap</p>
<p>Date Created: 4/1/2021</p>	<p>Created by: JDL</p>	

S:\PROJECT FILES\KCS\Port Arthur Loop\Mapping\new_chosen.mxd